

# MIRASOL PARCEL TWENTY

PART OF GOLF DIGEST P.C.D.  
SECTION 3, TOWNSHIP 42 SOUTH, RANGE 42 EAST,  
CITY OF PALM BEACH GARDENS,  
PALM BEACH COUNTY, FLORIDA  
SHEET 4 OF 4

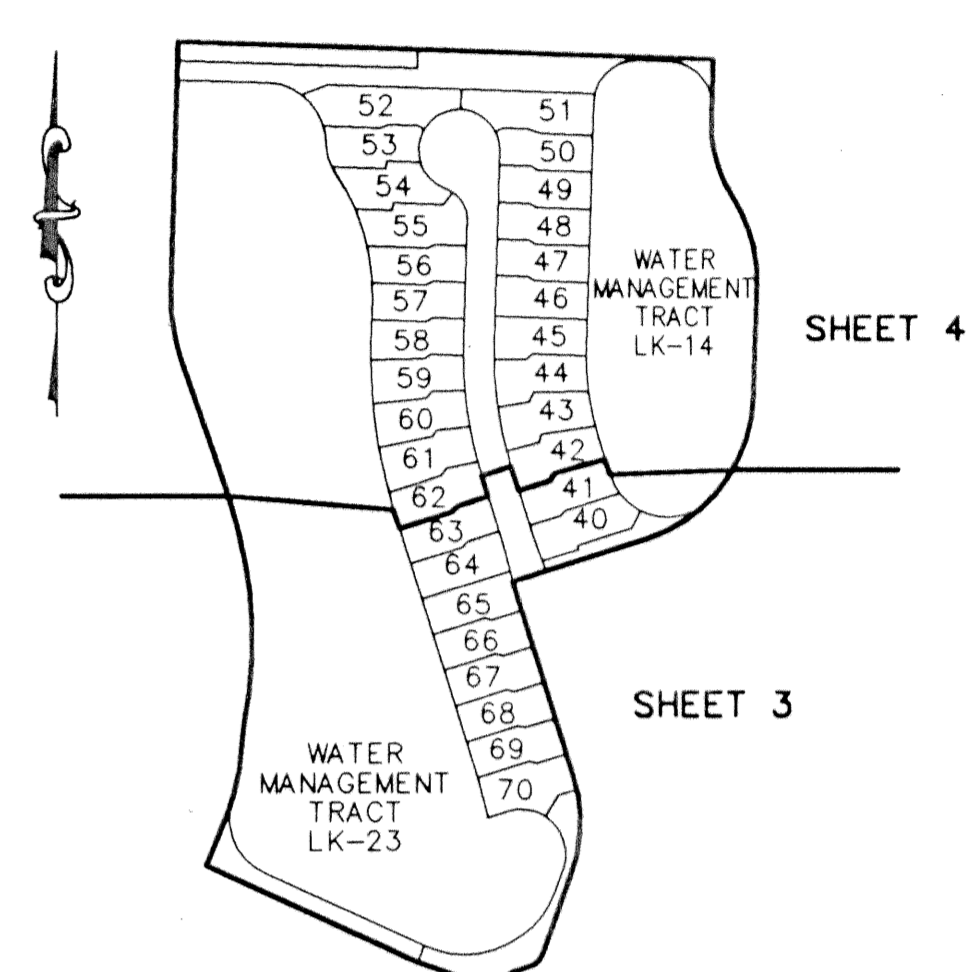
# 73

STATE OF FLORIDA  
COUNTY OF PALM BEACH

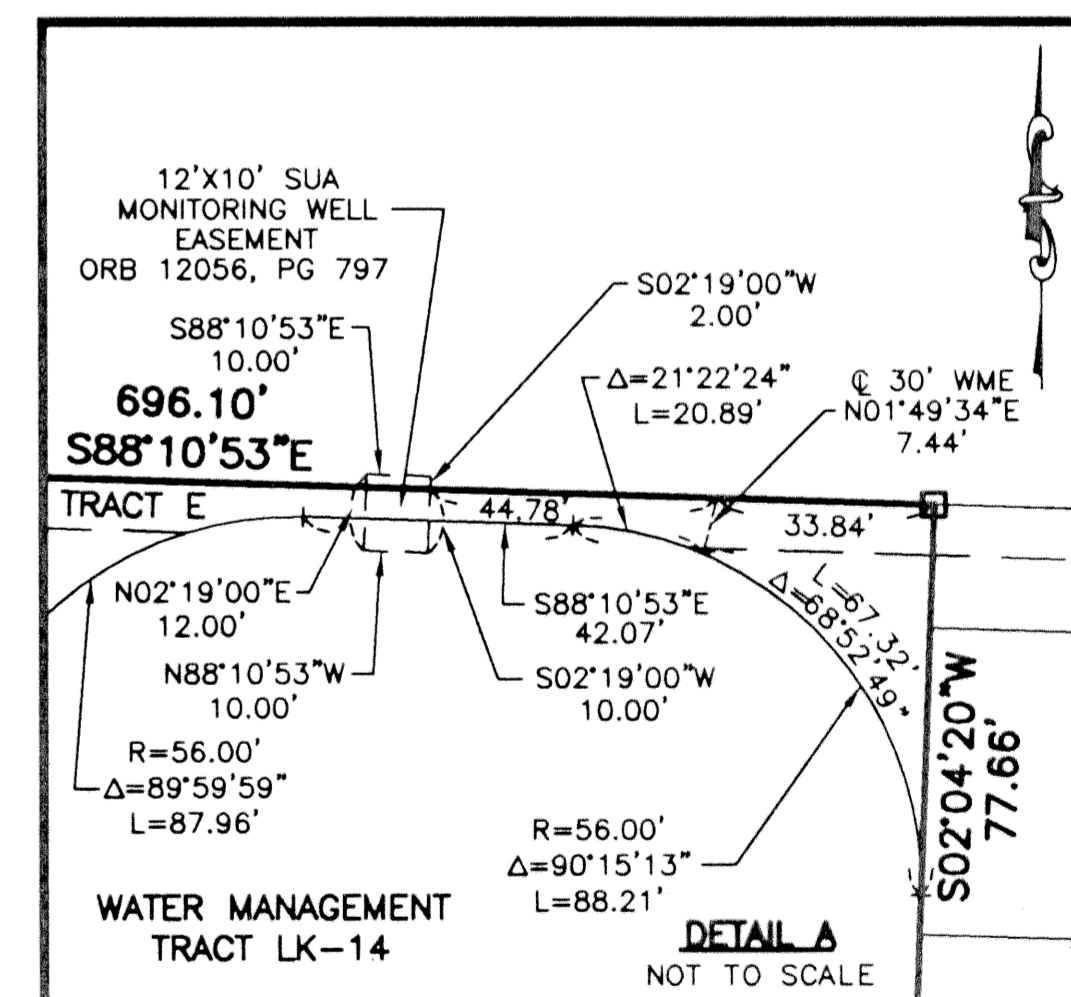
THIS PLAT WAS FILED FOR  
RECORD \_\_\_\_\_  
THIS \_\_\_\_\_ DAY OF \_\_\_\_\_  
AD, 2001 AND DULY RECORDED  
IN PLAT BOOK \_\_\_\_\_ ON PAGES  
\_\_\_\_\_ AND \_\_\_\_\_

DOROTHY H. WILKEN, CLERK  
BY: \_\_\_\_\_, D.C.

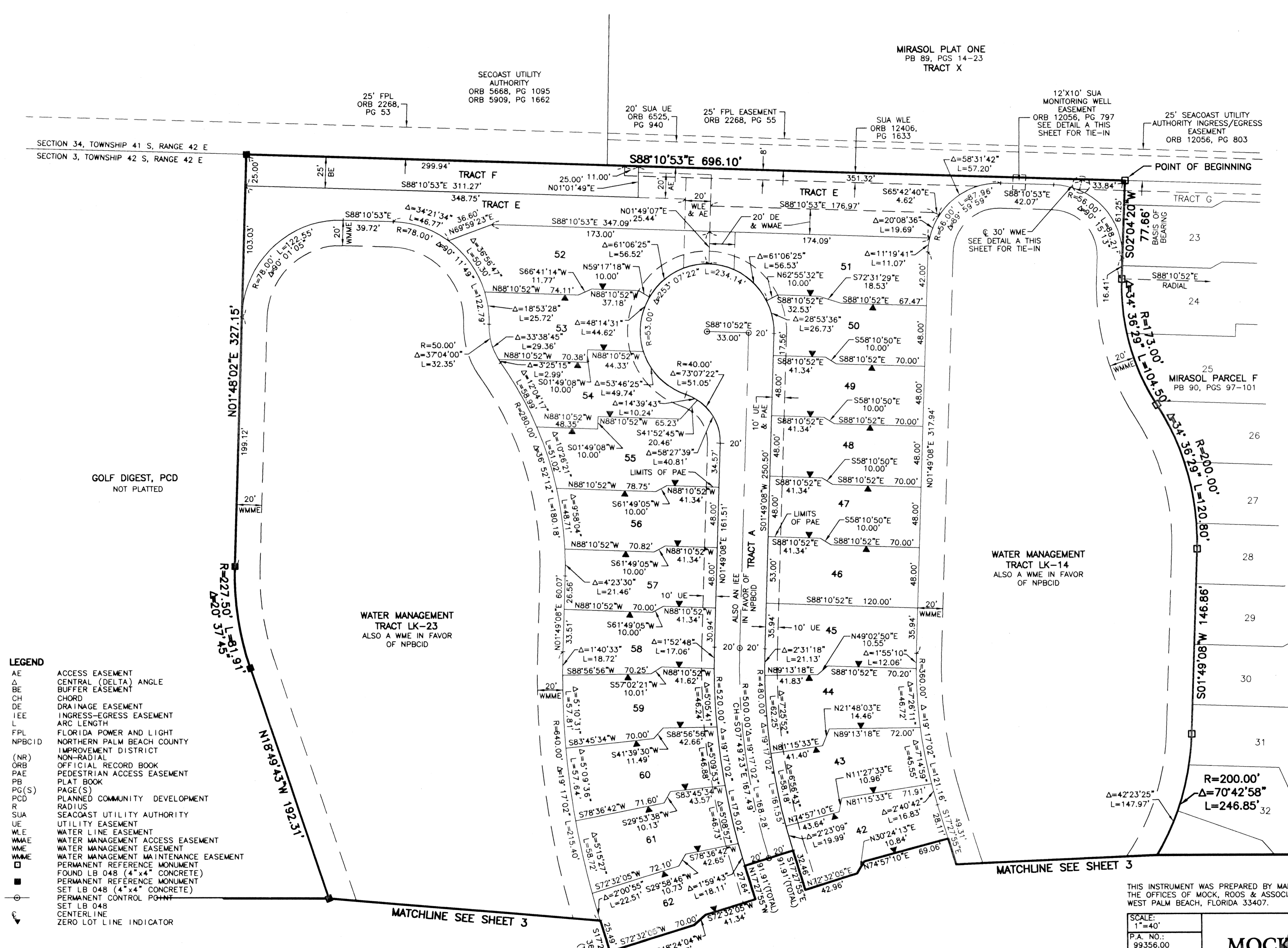
CIRCUIT COURT SEAL



SHEET LOCATION MAP  
NOT TO SCALE



DETAIL A  
NOT TO SCALE



- LEGEND**
- AE ACCESS EASEMENT
  - Δ CENTRAL (DELTA) ANGLE
  - BE BUFFER EASEMENT
  - CH CHORD
  - DE DRAINAGE EASEMENT
  - IEE INGRESS-EGRESS EASEMENT
  - L ARC LENGTH
  - FPL FLORIDA POWER AND LIGHT
  - NPBCID NORTHERN PALM BEACH COUNTY IMPROVEMENT DISTRICT
  - (NR) NON-RADIAL
  - ORB OFFICIAL RECORD BOOK
  - PAE PEDESTRIAN ACCESS EASEMENT
  - PB PLAT BOOK
  - PG(S) PAGE(S)
  - PCD PLANNED COMMUNITY DEVELOPMENT
  - R RADIUS
  - SUA SEACOAST UTILITY AUTHORITY
  - UE UTILITY EASEMENT
  - WLE WATER LINE EASEMENT
  - WMAE WATER MANAGEMENT ACCESS EASEMENT
  - WME WATER MANAGEMENT EASEMENT
  - WMMME WATER MANAGEMENT MAINTENANCE EASEMENT
  - PERMANENT REFERENCE MONUMENT FOUND LB 048 (4"x4" CONCRETE)
  - PERMANENT REFERENCE MONUMENT SET LB 048 (4"x4" CONCRETE)
  - PERMANENT CONTROL POINT
  - SET LB 048 CENTERLINE
  - ZERO LOT LINE INDICATOR

REV: 08-21-01  
CAD FILE:  
TAT1PA20\PA20RPO2

THIS INSTRUMENT WAS PREPARED BY MARY HANNA CLODFELTER, P.S.M. IN THE OFFICES OF MOCK, ROOS & ASSOCIATES, INC., 5720 CORPORATE WAY, WEST PALM BEACH, FLORIDA 33407.

SCALE:  
1"=40'  
P.A. NO.:  
99358.00  
DATE:  
MAY, 2001  
DRAWING NO.:  
42-42-03-59

FLORIDA L.B. NO. 48  
**MOCK • ROOS**  
ENGINEERS • SURVEYORS • PLANNERS  
5720 Corporate Way, West Palm Beach, Florida 33407  
(561) 683-3113, fax 478-7248

**MIRASOL PARCEL TWENTY**  
PART OF GOLF DIGEST P.C.D.  
SITUATE IN SECTION 3,  
TOWNSHIP 42 SOUTH, RANGE 42 EAST,  
CITY OF PALM BEACH GARDENS,  
PALM BEACH COUNTY, FLORIDA

SHEET 4 OF 4